

Appendix B. Field Investigation Photos

DRAFT





Albany Pond Pump Station (not operational)



Open-topped structure near W Swann Ave's crossing with the Selmon Expressway



42"x48" Box Culvert bend at the intersection of W De Leon St and S Oregon Ave.





Triple 4'x6' box culvert outfall into Hillsborough Bay at Bayshore Blvd and S Howard Ave



Verified change in size from 48" RCP to 60" RCP at the intersection of W Estrella St and S Habana Ave

DRY





Storm pipe in inventory is not found in field behind BridgePrep at St. John's School



Intersection of W Morrison Ave and S Marti St where the 48"x76" ERCP constricts to a 48" RCP



Opened manhole on S Rome Ave to confirm drainage into Swann Pond



Ditch that carries stormwater south to W Cypress St at S Gomez Ave



CSX Railroad, looking north toward W Swann Ave



Opened manhole confirms that pipe from W Palm Drive bypasses the stormwater pond adjacent to The Atrium on Bayshore



Manhole near the intersection of W Estrella St and S Habana Ave investigated to confirm 60" RCP along S Habana Ave





Verified drainage connectivity at W Swann Ave and S Armenia Ave

DRAFT





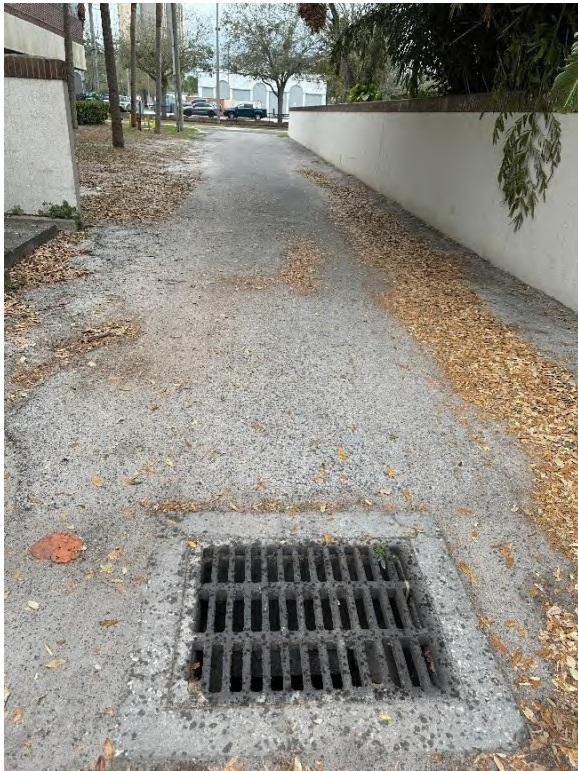
Manhole at the intersection of W Parkland Blvd and S Lakeview Rd. Confirmed a 36" RCP along W Parkland Blvd and a 19"x30" ERCP connecting from S Lakeview Rd



East side of AMI pond. Measured to verify information in reference plans. Standing water observed.



Pump station at AMI pond



Grate with the 4'x8' box culvert connecting to AMI pond



Manhole at the intersection of W De Leon St and S Tampania Ave. Confirmed 18" pipe to the west along W De Leon with a 15" pipe coming in from the north



Confirmed inlet on S Moody Ave has an 18" RCP that runs to the west through the school parking lot for St. John the Baptist Greek Orthodox Church



Manhole near the southwest corner of St. John the Baptist Greek Orthodox Church building that connects the 18" RCP from Moody Ave S to the 24" RCP that conveys water north to W Swann Ave





Manhole at the intersection of W Parkland Blvd and S Forest Dr confirms the 90-degree turn of the 48"x76" ERCP

DRAFT

